



Planimetrie

STABILE A 1:200

Superficie appartamenti (SUA)

- 2.5 mq 50.7
- 3.5 mq 81.1
- 4.5 mq 131.9

Superficie terrazza

- 2.5 mq 3.7
- 3.5 mq 8.0
- 4.5 mq 10.9



PT - 17 - 27

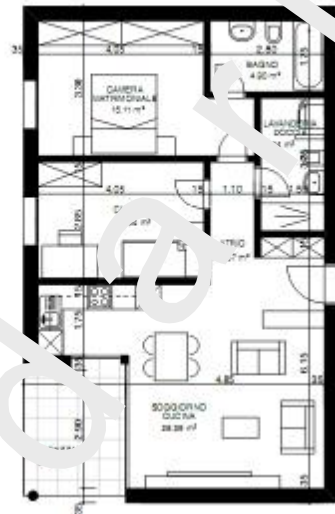
APPARTAMENTO 2.5 1:100



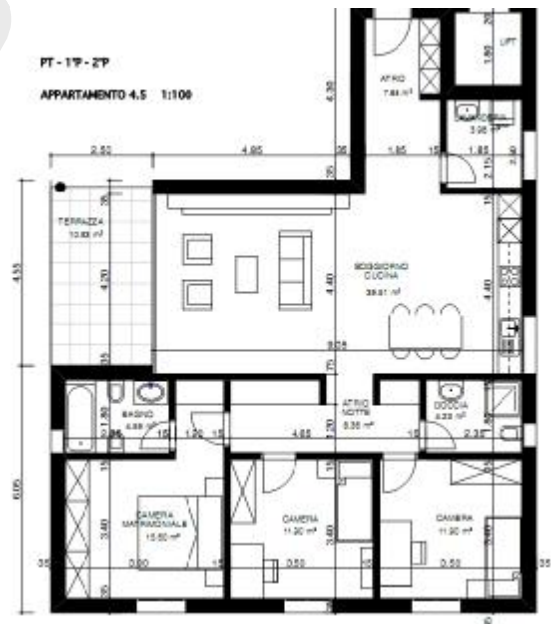


Planimetrie

PT - 1P - 2P
APPARTAMENTO 3.5 1:100



PT - 1P - 2P
APPARTAMENTO 4.5 1:100





Planimetrie

STABILE B e C 1:200

Superficie app. (S.U.L.)
3.5 mq B1.1
4.5 mq 126.0

Superficie terrazze
3.5 mq 8.0
4.5 mq 13.9/14.3



PT - 1°P - 2°P

APPARTAMENTO 3.5 1:100





Planimetrie

PT - 1°P - 2°P

APPARTAMENTO 4.5 1:100

